



2011 KOMATSU 4WD WB97R-5EO

ZM008877

From our yard to yours.

As an Australian family-owned company with global reach, Tilly's are constantly sourcing quality used machinery, from dozers to excavators. We recondition and repair where necessary to provide you with genuine alternatives to purchasing new machines. Speak to one of our experienced team today for the right machine, at the right price, right now.

MACHINE TYPE

BACKHOE

YEAR

2011

MAKE

KOMATSU

MODEL

WB97R-5

SPECIFICATIONS

KMTWB024V77F80376, 99HP-74KWIVECO F4GE9484F ENGINE, AIR ROPS CAB, BEM 4/1 BUCKET 42N-833-1800-00013 WITH SBA QUICKHITCH 3535-00-00-28063 OCT 2011, SIDESHIFT EXTENDAHOEWITH KOMATSU QUICKHITCH & GP BUCKET ALSO AUX HYDS, E STOPS, ISOLATOR, 12.5/80-18IMP 12PLY FRONT TYRES & GOOD 16.9-28IND (440/80-28) 12PLY REAR TYRES, LOAD STABILISER SYSTEM, RIDE CONTROL, BURST PROTECTION ON FRONT LOADER FRAME LIFT & TILT ALSO BACKHOE LIFT & STICK CYLINDERS, GOOD 12.5/80-18 FRONT & 16.9-28 REAR TYRES, SHOWING 3952 HOURS BUT HAS DONE TOH 4605 HOURS, CAB DOORS MISSING & DAMAGED, AIRCON NOT WORK PROPERLY, 9.0 TONNE, 5.8L, 2.32W, 3.75H, *CONDITIONS APPLY*

Contact our Sales team

☎ 07 4633 6000

✉ mail@tillys.com.au

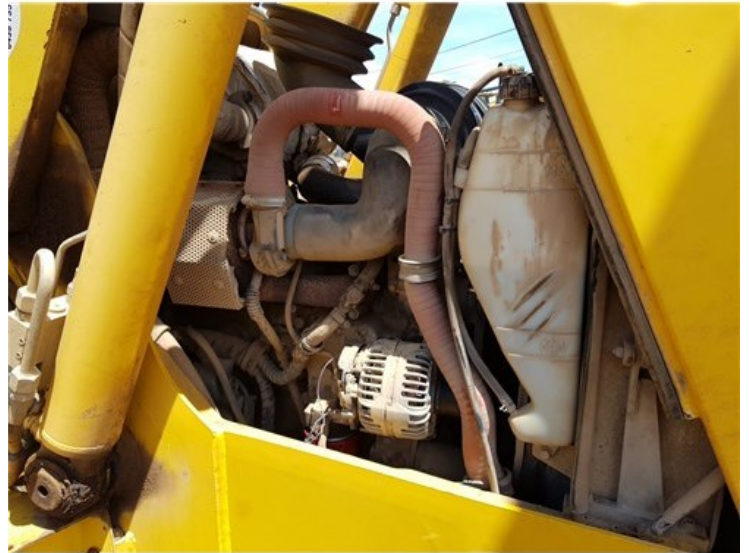
🌐 www.tillys.com.au

\$64,790.00 inc GST



2011 KOMATSU 4WD WB97R-5EO

ZM008877



*CONDITIONS OF SALE

All Machinery sold UNREGISTERED without STATUTORY WARRANTY.
Purchasing from overseas? View our website for terms and conditions.

www.tillys.com.au

